

COURSE VENUE

Workshop location: Laboratory of Anatomy
"Hospital del Mar"- Barcelona
Passeig Marítim, 25-29, 08003 Barcelona, Espagne

Language: English

Tuition Fee

FULL SINGLE REGISTRATION: Euro 1500

(Only 30 participants - Includes):

- Leading edge auditorium facility
- Special Event Dinner of the 6th April
- Course materials, lunches and coffee breaks
- *High quality Cadaver Specimens (two participants per specimen)*
- *Use of microscope, endoscope, drill, microdebrider, navigation system and dedicated instrumentation*

OBSERVER: Euro 500

(Only 15 participants - Includes):

- Leading edge auditorium facility
- Special Event Dinner of 6th April
- Course materials, lunches and coffee breaks

DEADLINE for inscriptions: February 28th 2017

Course Venue Secretariat (in Barcelona)

Dr. Giuseppe Garo SIACH
siach.courses@gmail.com

Organizing Secretariat

Doctor Event Limited – Bristol UK
doctor.event.ltd@gmail.com

For informations and inscriptions visit
<http://www.siach.eu>

Course Directors

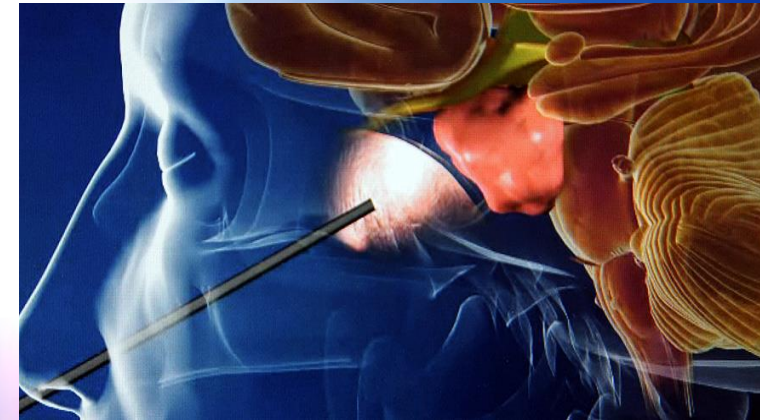
Dr. Jesus LAFUENTE
Dr. Salvatore CHIBBARO

Guest Speakers

Prof. Paolo CAPPABIANCA
Dr. Helene CEBULA
Prof. Christian DEBRY
Prof. Alessandro DUCATI
Prof. Sebastien FROELICH
Dr. Stephan GAILLARD
Dr. Raphael HIJANO
Dr. Torstein MELING
Prof. Francois PROUST
Prof. Pierre-Hugues ROCHE
Dr. Juan-Antonio SIMAL
Prof. Marcos TATAGIBA
Prof. Francesco TOMASELLO
Dr. Alberto TORRES

Under the auspices of

SIACH The International Society of Surgical Anatomy - Neurosurgery Department of Strasbourg University Hospital (FR) - ESBS European Skull Base Society - SNCLF Société de Neurochirurgie de Langue Francaise - SFNC Société Francaise de Neurochirurgie - EANS The European Association of Neurosurgical Societies



MINIMALLY INVASIVE SKULL BASE SURGERY

OPEN & ENDOSCOPIC APPROACHES
"Hands on Workshop"

Barcelona (Spain)
6th – 7th April 2017

6th April 2017

8:00 - 9:00 am Participants registration

9:00 – 9:15 am Welcome Introduction and Instructions: **Dr. S. Chibbaro/Dr. J. Lafuente**

9:15 – 9:35 am The Minipterional approach, indications limits and step-by-step technique. **J. Lafuente**

9:35 – 10:00 am Supraorbital Approach: Indications, limits and step by step technique. **T. Meling**

10:00 - 10:50 am Microsurgical Anatomy of CPA, indication and limits of retrosigmoid approach. **M. Tatagiba – P-H. Roche**

10:50 – 11: 10 am Coffee break

11.10 – 11:35 am Key hole retrosigmoid approach: Open and endoscopic assisted procedures; step by step technique. **S Froelich**

11:35 – 12:00 am Principles of Minimally Invasive neurosurgical approaches; from open to assisted and/or purely endoscopic technique, the present, the future, what's next challenge. **F. Tomasello**

12:00 – 12:20 pm Skull base approaches to manage neurovascular lesion, the role and limits of revascularization technique. **F. Proust**

12:20 – 12:45 pm Minimally invasive approach to posterior fossa and pineal region. **R. Reisch**

12:45 – 2:00 pm Lunch break

Hands – on Lab dissection section

2:00 - 3:00 pm Supraorbital approach: hands on lab dissection.

3:00 – 4:00 pm Minipterional approach: hands on lab dissection.

4:00 – 4:30 pm Coffee break

4:30 -7:00 pm keyhole Retrosigmoid approach – minimally invasive approach to posterior fossa and pineal region: hands on lab dissection.

9:00 pm Social Diner – Meet the faculty

7th April 2017

8:00 – 8:50 am FESS procedure and anatomy. Indications, limits and step by step technique. **C. Debry – R. HIJANO**

8:50 – 9:10 am Endoscopic anatomy of the ICA. **H. Cebula**

9:10 – 9:35 am Extended endoscopic approach to anterior skull base. Indications, limits and step by step technique. **P. Cappabianca**

9:35 – 10:00 am “The craniopharyngioma”, indication and surgical limits: what's the current gold standard management? **S. Gaillard**

10:00 – 10:30 am Coffee break

10:30 – 10:50 am Endoscopic approach to clivus. Indications, limits and step by step technique. **A. Torres**

10:50 – 11:10 am Endoscopic odontoidectomy. Indications, limits and step by step technique.

S. Chibbaro

11:10 – 11:30 am The current role of 3D endoscopy. **A. Ducati**

11:30 – 11:50 am Closure technique in endoscopic skull base surgery. **J-A Simal**

11:50 – 12:30 pm Participants and faculty case discussion: bring up your own case.

12:30 – 2:00 pm lunch break

Hands – on Lab dissection section

2:00 – 6:00 pm Nasoseptal flap – Sellar - Transplanum – Transtuberculum - Transclival and cranio-cervical junction endoscopic approaches: hands on lab dissection

6:00 – 6:15 pm Cours evaluation, closure and remarks, farewell. **S. Chibbaro**

WORKSHOP OBJECTIVE AND DESIGN

This hands-on workshop will allow the participants (Neurosurgeons, fellows and residents) to learn a variety of open and endoscopic skull base minimally invasive approaches utilizing state-of-the-art instrumentation under the guidance of a distinguished panel of teachers and surgeons.

At the end of the course, the participants should have developed optimal understanding of all anterolateral and posterolateral minimally invasive skull base approaches to anterior, middle and posterior fossa as well as sellar/suprasellar space, clivus and cranio-cervical junction.